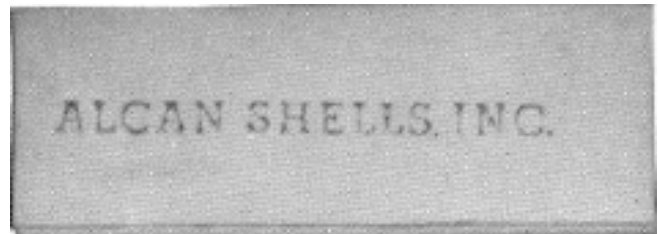
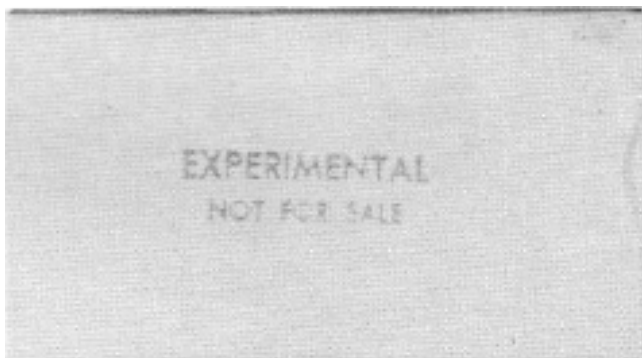


ALCAN SHELLS, Inc.

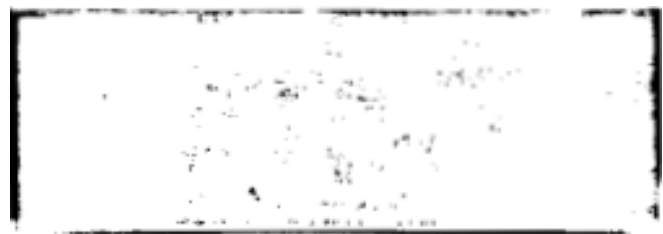
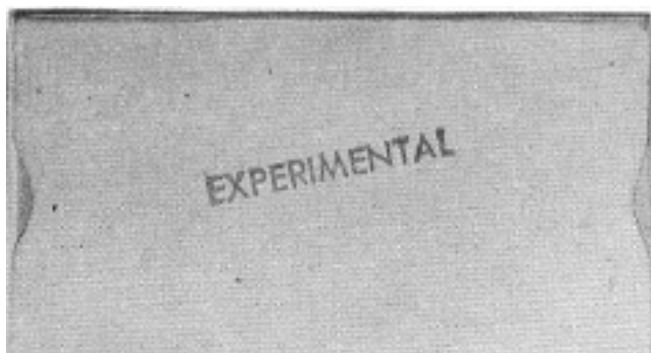
LR-1



LR-2



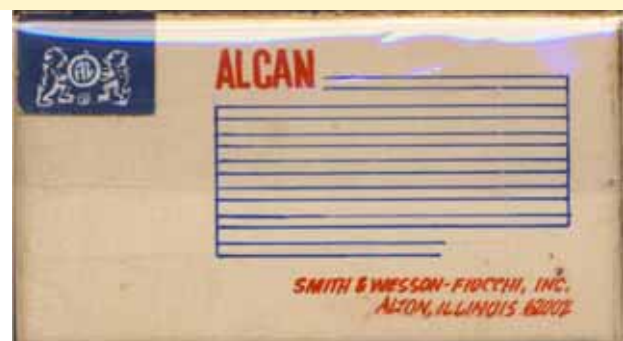
LR-3



LR-4



LR-4 bottom



ALCAN SHELLS, Inc.

During the 1968 to 1970 period, ALCAN produced some loaded cartridges on an experimental basis while they were developing their power tool cartridges. The following boxes are probably the boxes which these ball cartridges were loaded into.

- LR-1 **.22 LONG RIFLE.** White box with red hand stamped printing on top. The sides are hand stamped in black ink. One-piece box with end flaps. No product code. A grey plastic tray. "A-11" h/s on a brass case. Lead bullet.
- LR-2 **.22 LONG RIFLE.** White box with red hand-stamped printing on top. The side have a black hand-stamped printing. One-piece box with end flaps. Grey plastic tray. "A-12" h/s on a brass case. Lead bullet.
- LR-3 **.22 LONG RIFLE.** White box with red hand-stamped printing on top. No printing on the side. One-piece box with end flaps. Grey plastic tray. "A" h/s with no arrow on a brass case. Lead bullet.
- LR-4 **.22 LONG RIFLE.** Orange, blue and white one piece box with white, red and blue printing.. Produced by S&W-Fiocchi. Contents unknown.. Box from Dave Clemence collection.

LR-4 side.



Images from the George Kass *Headstamp Guide*.

"A-11" h/s



A-12" h/s



"A-9" h/s

